

On-Table Bowel Washout & Colonoscopy Illustration of Use

The Retrowash facilitates a swift, clean, on-table bowel washout (intra-operative colonic lavage) in colorectal surgery. It uses a new method of retrograde irrigation, and enables on-table colonoscopy. Antegrade irrigation may also be used. The product is available in two lumen sizes (35mm or 46mm diameter), and its use is illustrated below and overleaf.

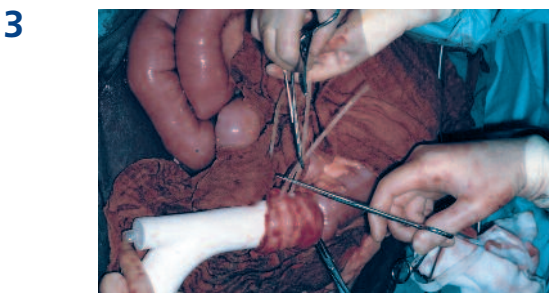


Obstructed large bowel, mobilised.

As the colon is distended, the 46mm Retrowash is used.



Isolation of bowel for transection and attachment to Retrowash handpiece.



Attachment of bowel to Retrowash handpiece using ties provided.

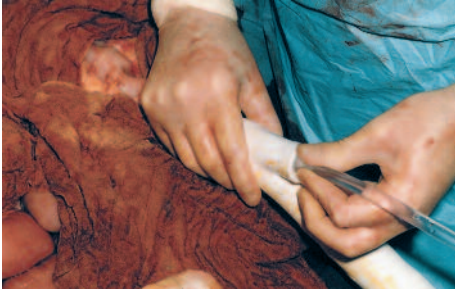


Cutting nipple of retrograde irrigation administration port. The port will re-seal when irrigation tubing is inserted.

Where antegrade irrigation is used, nipple is left intact.



5



Insertion of irrigation tubing, which is progressed through handpiece to bowel. Irrigation begins.

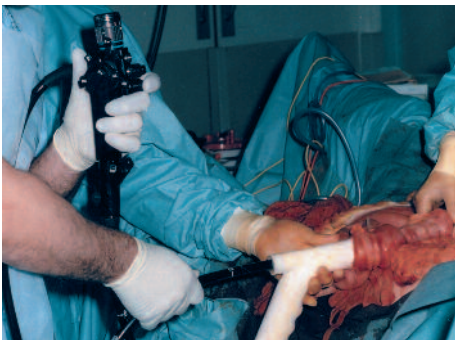
6



As bowel clears irrigation tubing is advanced along the bowel toward the caecum, progressively irrigating in 250ml bursts.

Cubitainer fills as effluent flows out of the bowel and down waste tubing. Average irrigation procedure time is 10-15 mins.

7



Insertion of colonoscope after irrigation. The seal expands to accommodate the scope.

When antegrade irrigation has been used, nipple should be cut at this point.

8



Removal of Retrowash, permitting the fashioning of an end-to-end anastomosis.

CE 0120

STERILE R

L A T E X

Order Info: 35mm Retrowash RW35
46mm Retrowash RW46

Patents: GB2375961, others pending worldwide

INTERMARK MEDICAL INNOVATIONS LTD

The Coach House
34 Southborough Rd
Bromley
Kent BR1 2EB
UNITED KINGDOM

UK Tel: 020 8467 3355
UK Fax: 020 8467 3364
Int. Tel: +44 20 8467 3355
Int. Fax: +44 20 8467 3364
e-mail: info@intermarkmedical.com